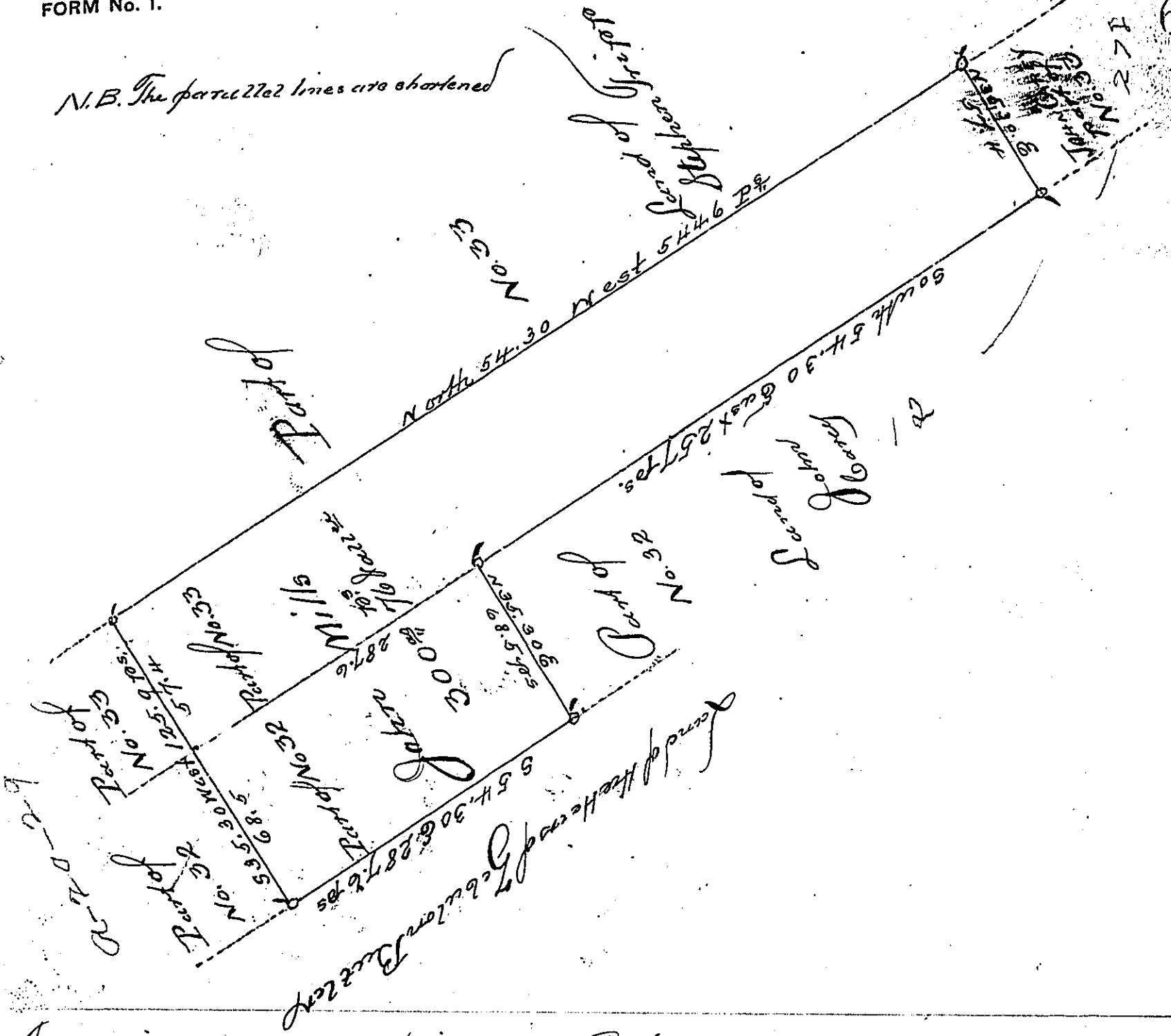


N.B. The parallel lines are shortened



Draught of a tract of land situate in Providence one of the seventeen Townships in Luzerne County, being part of numbers Twenty-two and Thirty-three in that Township, and containing three hundred acres and seventy six perches with the usual allowance of six per centum for roads, surveyed the above described tract of land for John Mills the 8th day of May A.D. 1818, by virtue of his warrant dated the 14th day of May A.D. 1818,

To Jacob Spanler Esquire
 Surveyor Genl.
 John Bennet D. J.

IN TESTIMONY that the above is a copy of the original remaining on file in the Department of Internal Affairs of Pennsylvania, made conformably to an Act of Assembly approved the 16th day of February, 1833, I have hereunto set my Hand and caused the Seal of said Department to be affixed at Harrisburg, this seventh day of July, 1903

James R. Powell
 Secretary of Internal Affairs.